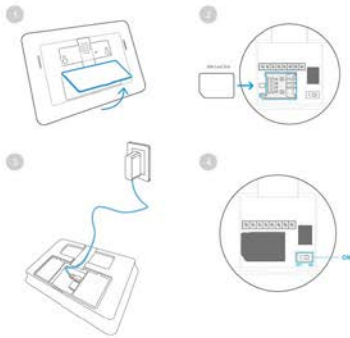


Step 1

Control Panel Operation

1. Open the battery compartment at the back side.
2. Insert a GSM SIM card to the slot.
3. Connect the main power to the control panel through AC adapter.
4. Slide the power switch from "OFF" to "ON" .

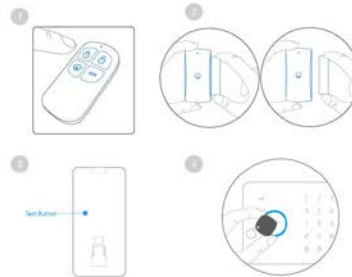


Step 2

Accessories Configuration

Test the pre-programmed system with accessories.

1. RC-80
Press any button on remote control to test the connection.
2. DWC-100
Trigger the door/window contact by separating the magnet to test the connection.
3. PIR-900
Press the test button at the back in armed mode to test the connection.
4. TAG-26
Put the tag close to RFID reader area in armed mode to disarm the system.
Note: Main power shall be connected when using RFID tag disarm function.



Step 3

Download G5 Alarm App

Download App from App Store or Google play by searching keyword "G5 Alarm" .



G5 Alarm | 🔍



Step 4

System Configuration through App

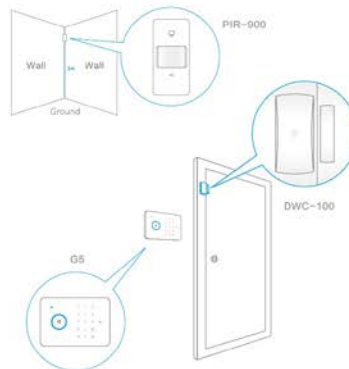
Make system configuration through App operation or by sending "1" to control panel phone number.



Step 5

Alarm System installation

Install the control panel and accessories to the right place.



QUICK GUIDE

for G5 GSM/SMS/RFID Touch Alarm System